

## THE MALDRON HOTEL

Cannon Place, Brighton, BN1 2FB.



## MONTHLY NEWSLETTER

June 2023

CM-T-20	Rev. 01
Issue Date: 28/02/2018	Page 2 of 11

### Introduction:

The following Newsletter outlines a brief update on the project progress over the past month, and the month ahead. This is focused on the forming and completion of the upper floors and concrete stairs. We will also be continuing with the internal blockwork and the Façade to the East elevation and courtyard. The Internal partitions will also commence.

### Project Progress Overview:

Following on from our April Newsletter.

We are progressing with the Superstructure works to the concrete frame. This is the current progress do date:

Ground Floor - 100%

1<sup>st</sup> Floor – 100%

2<sup>nd</sup> Floor – 100%

3<sup>rd</sup> Floor – 100%

4<sup>th</sup> Floor – 100%

5<sup>th</sup> Floor –100%

6<sup>th</sup> Floor -100%

7<sup>th</sup> Floor -50%

8<sup>th</sup> Floor -25%

We are continuing with internal blockwork to the Basement and ground floors. We will be constructing the 7<sup>th</sup> & 8<sup>th</sup> floor slabs and the overruns to the lifts and stair cores. The external scaffold to the East elevation and central courtyard has commenced and will continue to other elevations over the next 12 weeks. The External Façade to the East elevation, south elevation and central courtyard will continue. We will also commence with the installation of the external windows. The internal walls and partitions to the upper floors has commenced and will continue. The mechanical and electrical installation has also commenced. We are also proposing to install the gas main.

CM-T-20	Rev. 01
Issue Date: 28/02/2018	Page 3 of 11

### Health & Safety:

CField Construction places the greatest importance to the health and safety of all persons involved in the project and to our neighbouring community. During this period we have had further weekly audits from our internal H&S team which benefit the whole team greatly.

Remote Monitoring of Noise, Dust and Vibration continue to be carried out by an Environmental specialist. This is monitored daily, weekly or monthly moving forward depending on activities being undertaken at the time, additionally dust control and suppression measures are currently in place and working well. At this time we can confirm that no trigger levels have been reached in relation to our environmental monitoring.

CField are working with Considerate Contractors on this project and will have numerous meetings as the project progresses, any feedback given will be taken on board by CField with the aim to improving the project for us and the community.

The site is monitored by CCTV, but If anyone sees anything suspicious in or around the project, then please do not hesitate to contact CField or the site security team.

### Traffic Management/Pedestrian Management:

All construction vehicles will access the site at a dedicated construction entrance during each phase of the project. During construction access will be via Kings Road onto Cannon Place with all construction vehicles being directed safely to the site unloading zone along Cannon Place as agreed with Brighton & Hove City Council. CField will erect signage to alert all personnel of the relevant entrances.

CField have also placed pedestrian diversion signage around the site perimeter to direct the general public to the safest crossing points, this pedestrian diversion plan has been agreed in conjunction with Brighton & Hove Highways Team. We would kindly ask that all pedestrians use these crossing points to ensure safe crossing for all in close proximity to the site.

### Work Programme:

CField will be carrying out the construction works in phases. The programme below shows an outline of the scope of works forecasted for the next few months.

CM-T-20	Rev. 01
Issue Date: 28/02/2018	Page 4 of 11

Scope of Works	JUNE	JULY	AUGUST
Basement/Ground Floor Blockwork			
7th Floor Slab			
8th Floor Slab			
External Façade (East Elevation-Cannon Place)			
Internal Partitions & Walls			
Mechanical Installation			
Electrical Installation			
External Scaffold			
Structural Steel 4-5 <sup>th</sup> Floor			
Gas Main			

Please note that this programme is a guide and may change. Should these dates alter, we will notify you of the revised programme of works in our subsequent newsletters.

**CField Construction:**

**Contact Details**

- **CField Head Office:**

Tower Bridge Business Centre

46-48 East Smithfield

London

E1W 1AW

T: +44 (0)20 7078 4364

E: [brightonqueries@cfield.co.uk](mailto:brightonqueries@cfield.co.uk)

- **Out of Office: Emergency Contact Details:**

E: [brightonqueries@cfield.co.uk](mailto:brightonqueries@cfield.co.uk)

We will continue to send out Monthly newsletters with necessary information and project updates.

CM-T-20	Rev. 01
Issue Date: 28/02/2018	Page 5 of 11

## Project Newsletter

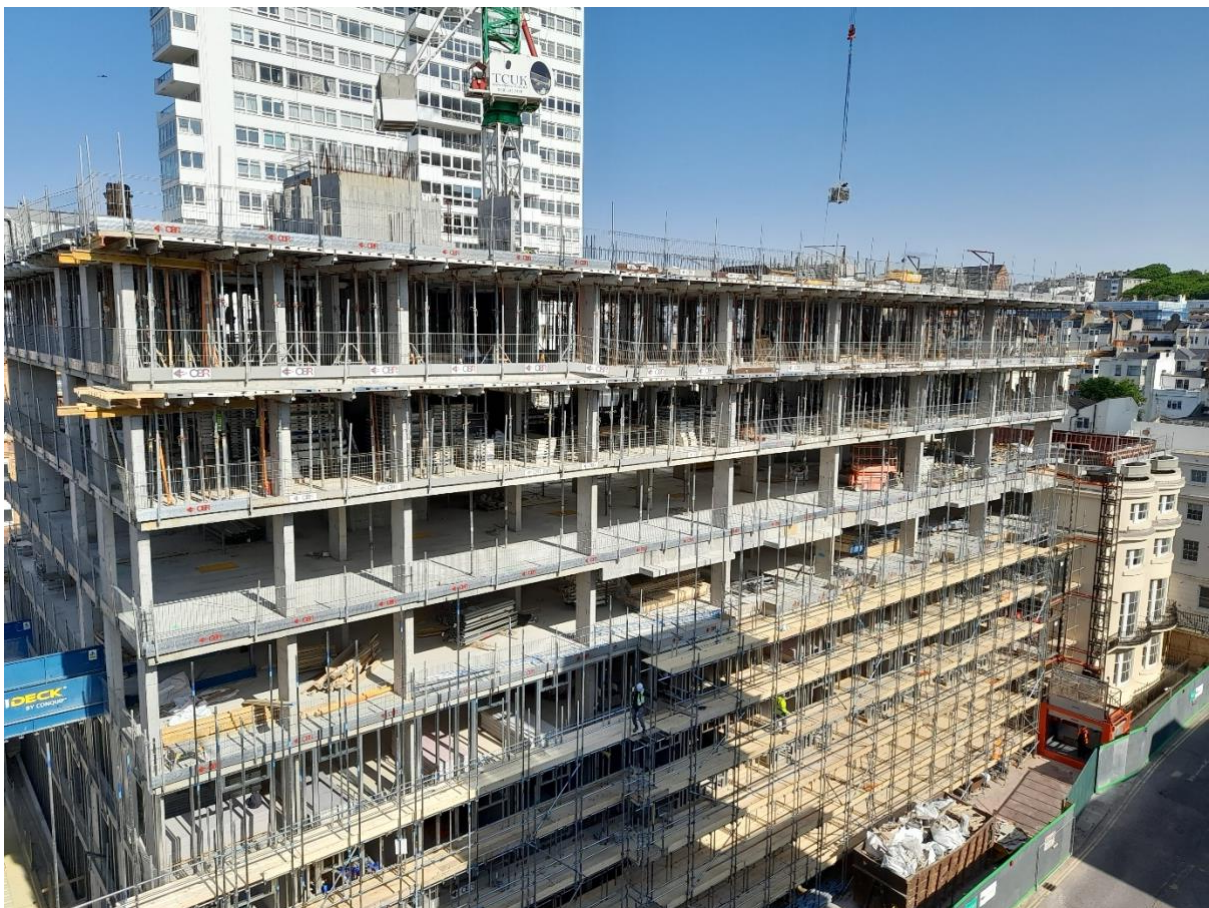
If you have any queries or require further information over the duration of the project, please feel free to contact us via the contact details noted above.

We thank you for your interest in the project and look forward to your co-operation during the construction works.

Many thanks,  
*The CField Construction Project Delivery Team*









CM-T-20	Rev. 01
Issue Date: 28/02/2018	Page 7 of 11















