

## THE MALDRON HOTEL

Cannon Place, Brighton, BN1 2FB.



# MONTHLY NEWSLETTER

January 2023

CM-T-20	Rev. 01
Issue Date: 28/02/2018	Page 2 of 9

### Introduction:

The following newsletter outlines a brief update on the project progress over the past month and the month ahead. This has been focused on the continuation of the under slab drainage/services, groundworks, the further casting of the basement slab, completion of the Service Lift shaft and stair core, and commencing the construction of the 3 No guest lift shafts and the guest Stair Cores 2 and 3 from the basement to the 8<sup>th</sup> floor.

### Project Progress Overview:

Following on from our December newsletter.

We are continuing with the foundations, drainage and basement slab works to zone 4 behind the Listed Facade. We are also continuing with the zone 3 high level foundations and ground floor drainage to include a heading into the main Southern Water sewer below St Margaret's Place. The Slipform construction to the 3 No guest lift shafts and stair core has begun and we hope to start raising the shafts and stair core next week. The concrete columns and RC shear walls from basement to ground floor will continue this month along with the installation of the slab formwork and the forming of the ground floor slab. The similar operation of forming the RC shear walls and columns ground to 1<sup>st</sup> floor and the 1<sup>st</sup> floor slab will also commence later in the month.

### Health & Safety:

CField Construction places the greatest importance to the health and safety of all persons involved in the project and to our neighbouring community. During this period we have had further audits from our internal H&S team which benefit the whole team greatly.

Remote Monitoring of Noise, Dust and Vibration continue to be carried out by an Environmental specialist. This will be monitored daily, weekly or monthly moving forward depending on activities being undertaken at the time, additionally dust control and suppression measures are currently in place and working well. At this time we can confirm that no trigger levels have been reached in relation to our environmental monitoring.

CField are working with Considerate Contractors on this project and will have numerous meetings as the project progresses, any feedback given will be taken on board by CField with the aim to improving the project for us and the community. A 6 monthly audit was carried out by Considerate Constructors on the 10<sup>th</sup> November and the site achieved a creditable score of 42/45.

CM-T-20	Rev. 01
Issue Date: 28/02/2018	Page 3 of 9

The site is monitored by CCTV, but If anyone sees anything suspicious in or around the project, then please do not hesitate to contact CField or the site security team.

**Traffic Management/Pedestrian Management:**

All construction vehicles will access the site at a dedicated construction entrance during each phase of the project. During construction access will be via Kings Road onto Cannon Place with all construction vehicles being directed safely to the site unloading zone along Cannon Place as agreed with Brighton & Hove City Council. CField will erect signage to alert all personnel of the relevant entrances.

CField have also placed pedestrian diversion signage around the site perimeter to direct the general public to the safest crossing points, this pedestrian diversion plan has been agreed in conjunction with Brighton & Hove Highways Team. We would kindly ask that all pedestrians use these crossing points to ensure safe crossing for all in close proximity to the site.

**Work Programme:**

CField will be carrying out the construction works in phases. The programme below shows an outline of the scope of works forecasted for the next few months.

Scope of Works	JANUARY	FEBRUARY	MARCH
Groundworks Zone 3 & 4			
Slipform to Guest Lifts & Stairs			
Ground Floor slab			
1 <sup>st</sup> Floor slab			

Please note that this programme is a guide and may change. Should these dates alter, we will notify you of the revised programme of works in our subsequent newsletters.

CM-T-20	Rev. 01
Issue Date: 28/02/2018	Page 4 of 9

**CField Construction:**

**Contact Details**

• **CField Head Office:**

Tower Bridge Business Centre

46-48 East Smithfield

London

E1W 1AW

T: +44 (0)20 7078 4364

E: [brightonqueries@cfield.co.uk](mailto:brightonqueries@cfield.co.uk)

• **Out of Office: Emergency Contact Details:**

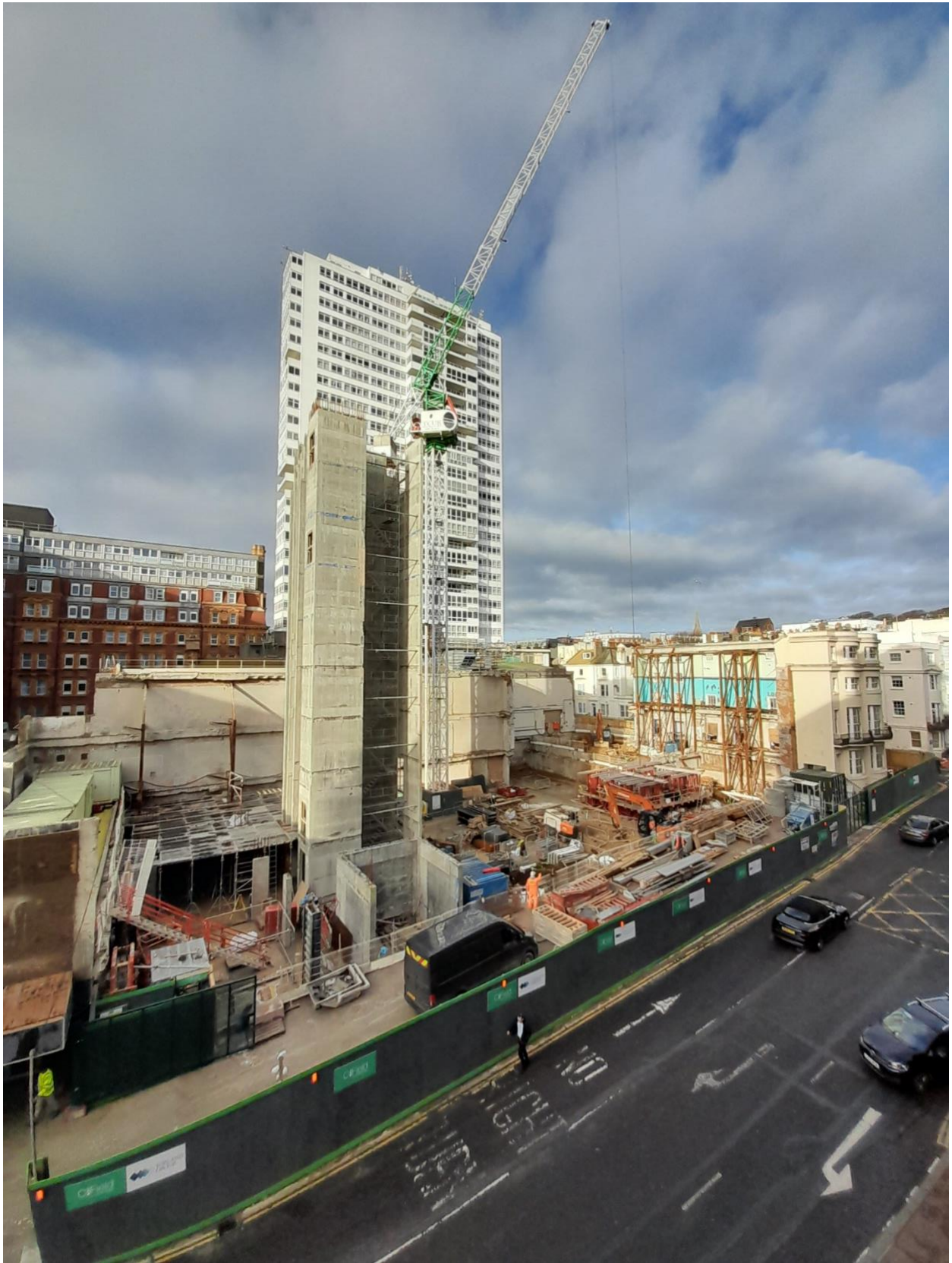
E: [brightonqueries@cfield.co.uk](mailto:brightonqueries@cfield.co.uk)

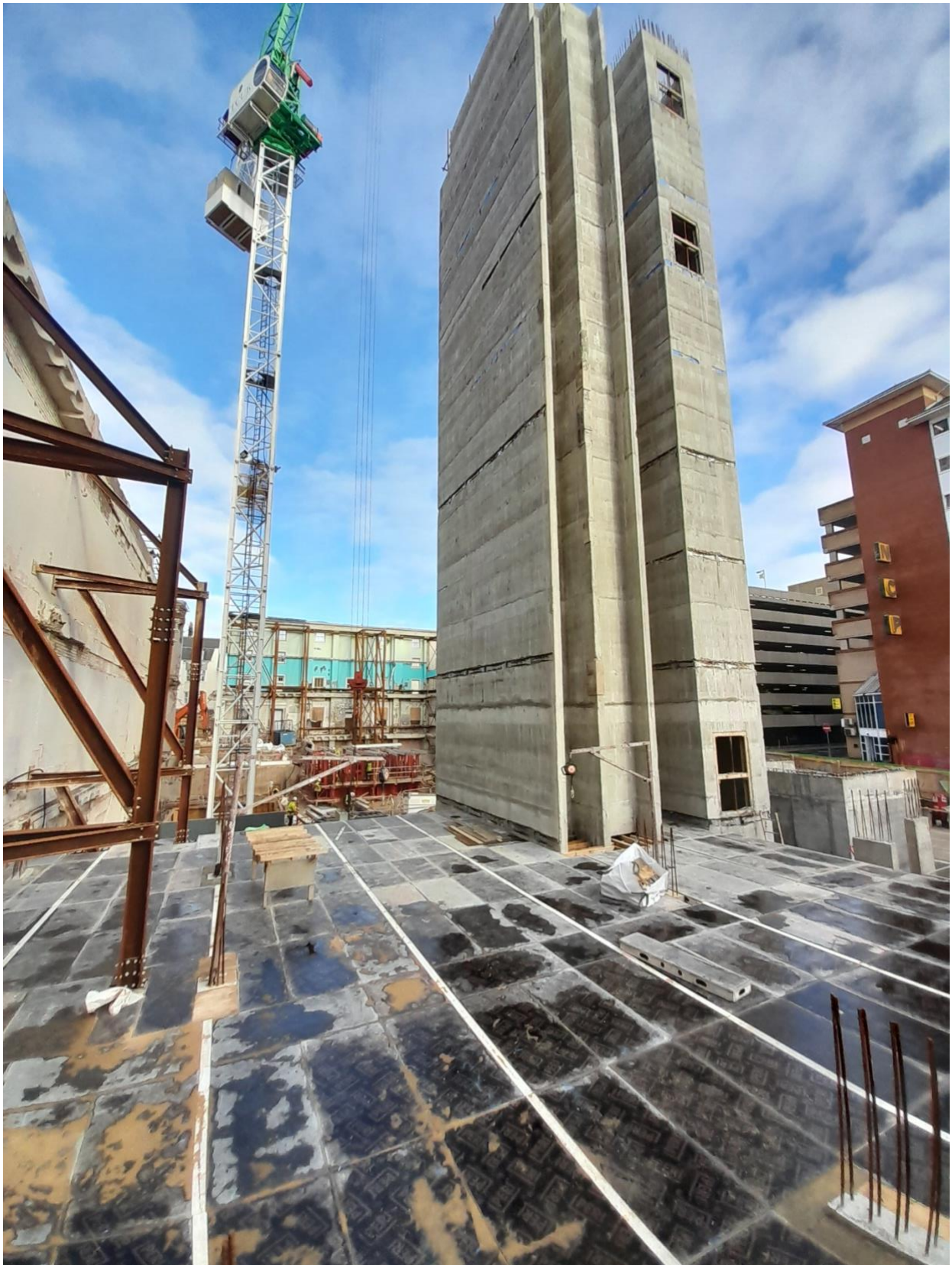
We will continue to send out Monthly newsletters with necessary information and project updates. If you have any queries or require further information over the duration of the project, please feel free to contact us via the contact details noted above.

We thank you for your interest in the project and look forward to your co-operation during the construction works.

Many thanks,

*The CField Construction Project Delivery Team*











CM-T-20	Rev. 01
Issue Date: 28/02/2018	Page 9 of 9

